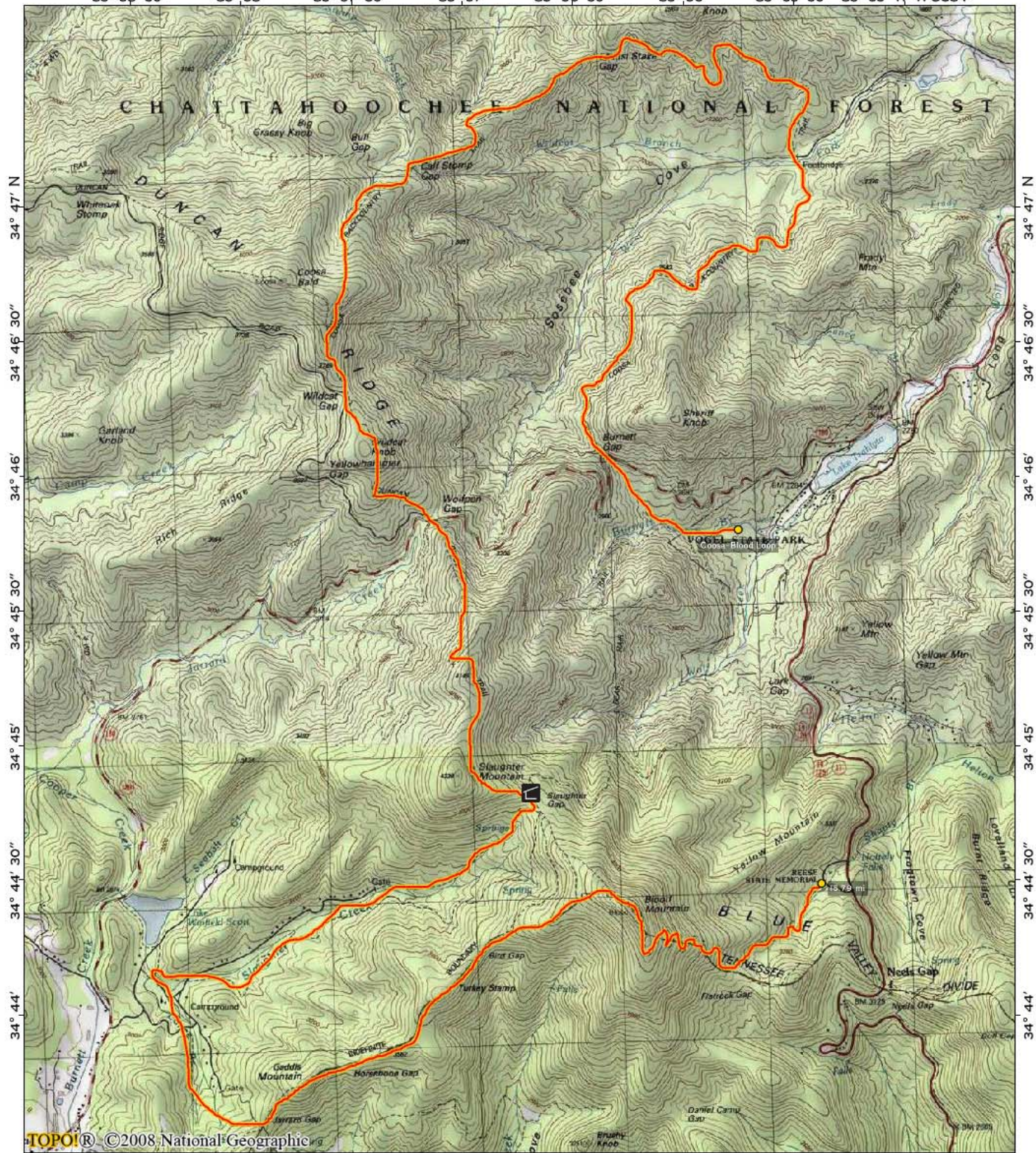
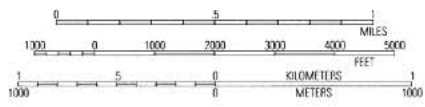
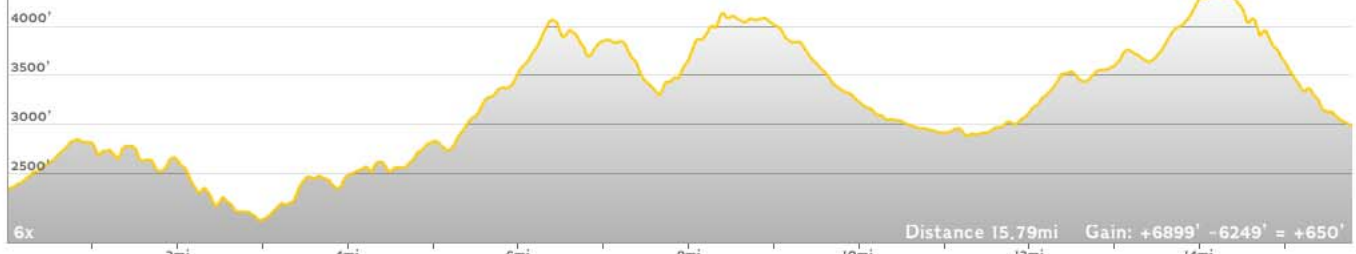


83° 58' 30" 83° 58' 83° 57' 30" 83° 57' 83° 56' 30" 83° 56' 83° 55' 30" 83° 55' W WGS84

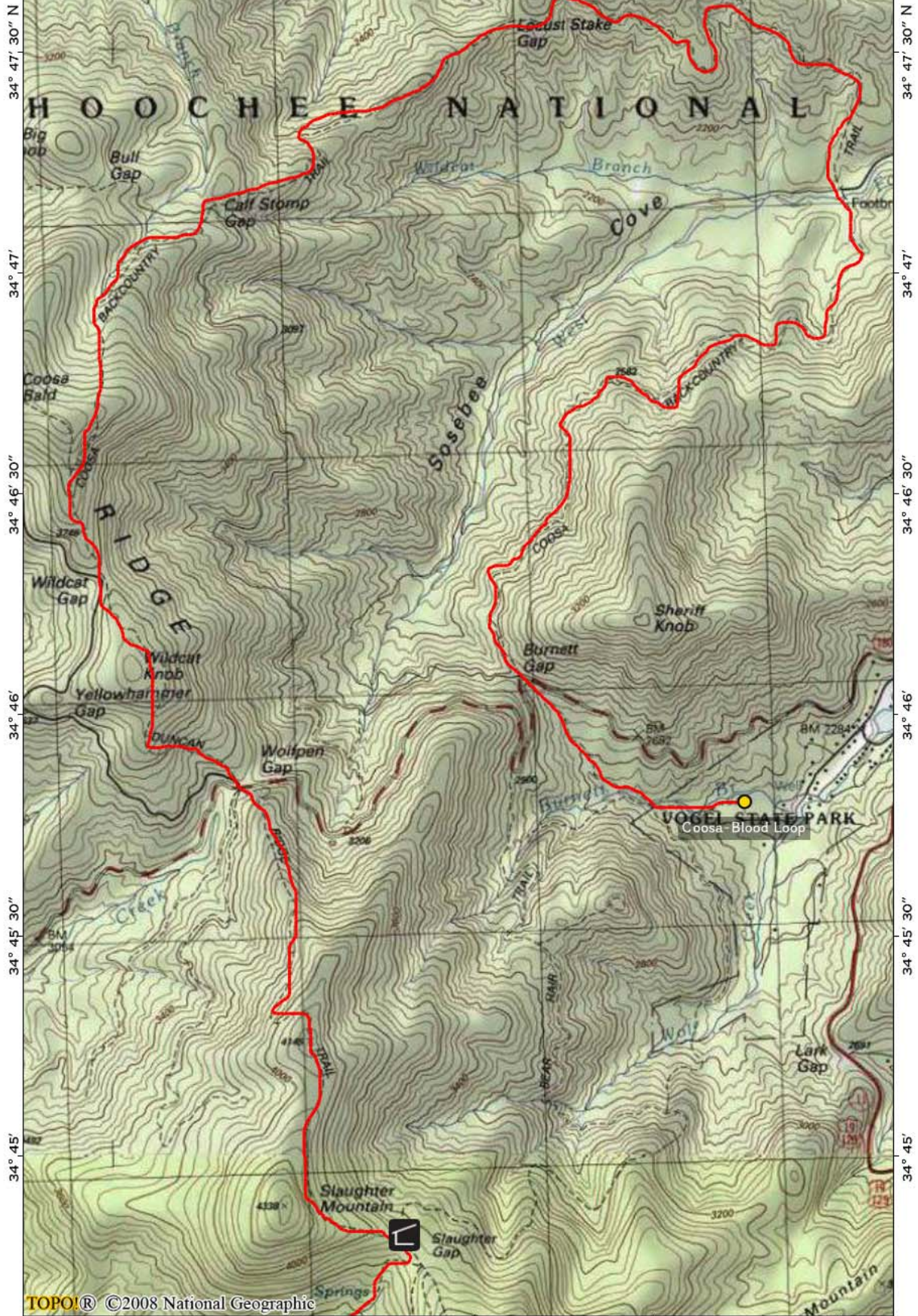


83° 58' 30" 83° 58' 83° 57' 30" 83° 57' 83° 56' 30" 83° 56' 83° 55' 30" 83° 55' W WGS84





83° 57' 30" 83° 57' 83° 56' 30" 83° 56' 83° 55' 30" W WGS84



TOPO!® ©2008 National Geographic

83° 57' 30" 83° 57' 83° 56' 30" 83° 56' 83° 55' 30" W WGS84

